

THUNDERSLEY \ £1,150 pcm
56 Nicholson Road, Thundersley, Essex SS7 1RJ



Offered to let is this three bedroom mid terrace family home in Thundersley set within a desirable location and close to the local secondary school. The property comprises of a lounge with feature fireplace, newly fitted kitchen with dining area, three good size bedrooms and a four piece bathroom suite. Externally there is off street parking and front garden and rear garden with shed.

Call 01702 555888 to find out more...

Nº of bedrooms	3
Style of property	Terraced House
Parking	Off Street Parking
EPC	Band D

- Residential
- Commercial
- Lettings
- Financial

Making property personal since 1972

**Lounge 17'07 \ Newly Fitted Kitchen/Diner 15'01 x 8'02 \ Bedroom One 16'10 x 8'4 \
Bedroom Two 9'06 x 7'05 \ Bedroom Three 10'00 x 6'00 \ Bathroom 7'05 x 6'00 \ Off Street
Parking \ Garden With Shed \ Available Now \ EPC Band D **

Accommodation Comprises \

Lounge 17'07

Double glazed window, fitted carpet, power points, radiator, feature fireplace.

Kitchen/Diner 15'01 x 8'02

Double glazed windows and patio doors to rear leading to garden, newly fitted units to eye and base level, roll edge work surfaces incorporating sink and drainer unit, space for dining table, wood effect flooring, part tiled walls, radiator, power points.

Bedroom One 16'10 x 8'4

Double glazed window, fitted bedroom furniture, fitted carpet, power points, radiator.

Bedroom Two 9'06 x 7'05

Double glazed window, wood effect flooring, power points, radiator.

Bedroom Three 10'00 x 6'00

Double glazed window, fitted carpet, power points, radiator.

Bathroom 7'05 x 6'00

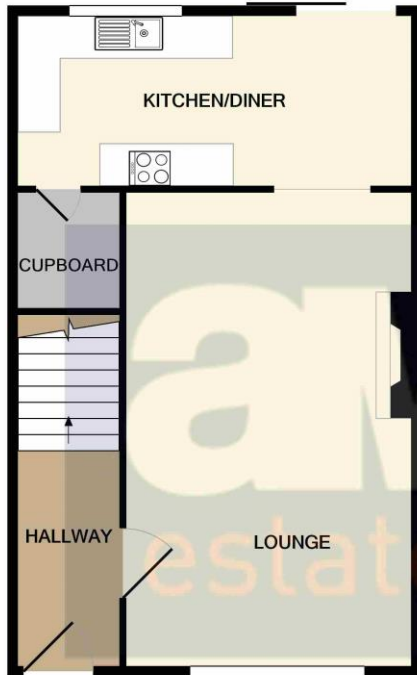
Obscure double glazed window, four piece suite comprising low level WC, wash basin, corner shower cubicle and panelled bath with hand held shower attachment over, tiled walls, wood effect flooring, radiator.

Outside

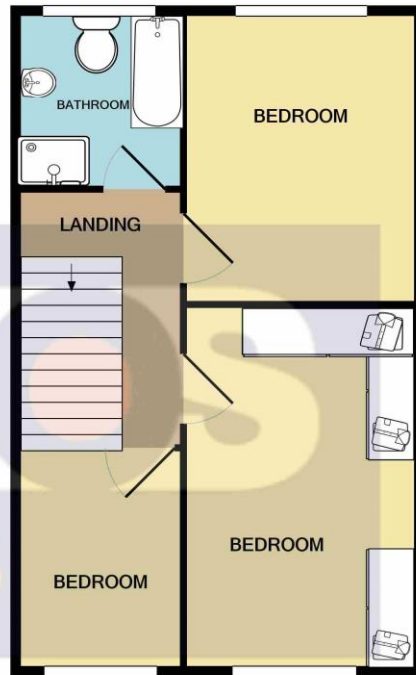
Rear garden with shed, off street parking to the front.

**Available Now \ Working Applicants Only \ No
Pets Allowed \ Full Referencing Required \
EPC Band D **





GROUND FLOOR
APPROX. FLOOR
AREA 582 SQ.FT.
(54.1 SQ.M.)



1ST FLOOR
APPROX. FLOOR
AREA 582 SQ.FT.
(54.1 SQ.M.)

TOTAL APPROX. FLOOR AREA 1164 SQ.FT. (108.1 SQ.M.)

Whilst every attempt has been made to ensure the accuracy of the floor plan contained here, measurements of doors, windows, rooms and any other items are approximate and no responsibility is taken for any error, omission, or mis-statement. This plan is for illustrative purposes only and should be used as such by any prospective purchaser. The services, systems and appliances shown have not been tested and no guarantee as to their operability or efficiency can be given

Made with Metropix ©2020