

Canvey Island \ £750 pcm
High Street, Canvey Island SS8 7RD



We are pleased to offer for let this two bedroom maisonette in the heart of Canvey Island surrounded by the local amenities. Offering a modern kitchen with breakfast area, a large lounge with a door opening onto a balcony, two good size bedrooms and modern four piece bathroom suite!

Call 01702 555888 to find out more...

Quote Ref:
EAH5200

Nº of bedrooms **2**

Style of property **Maisonette**

Parking **Off Street Parking**

Location **Town Centre**

- Residential
- Commercial
- Lettings
- Financial

Making property
personal since 1972

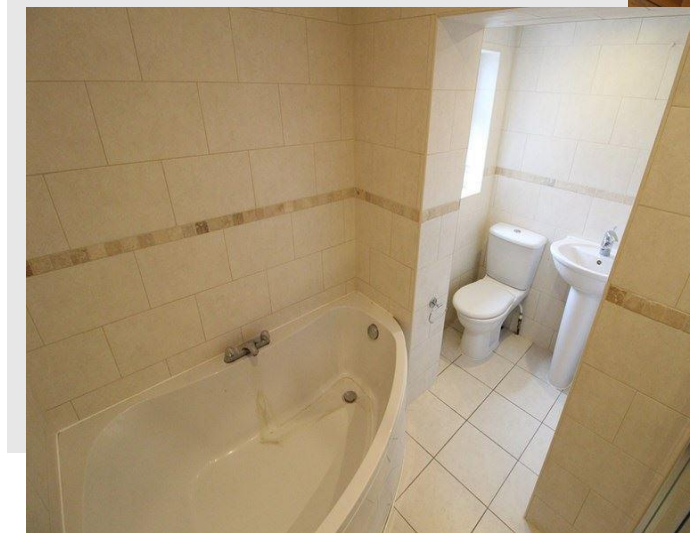
Accommodation \

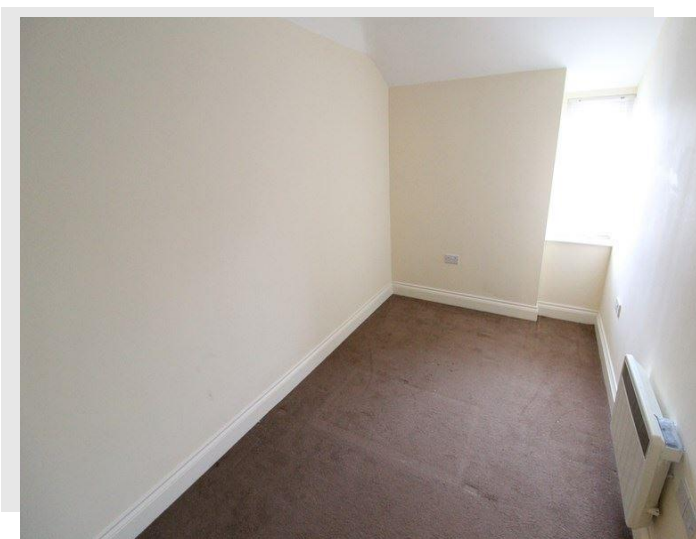
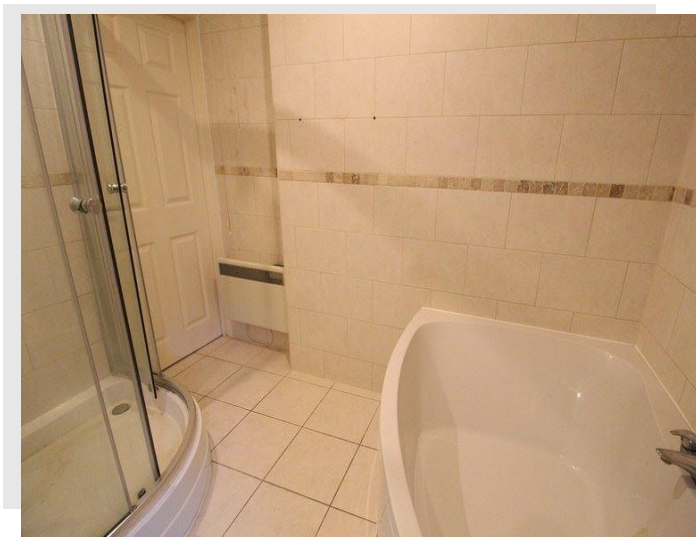
Two Bedroom Maisonette / Private Entrance Opening Onto Hallway / Modern Kitchen With Breakfast Area 10'10 x 10'07 / Large Lounge 16'11 x 10'03 / Balcony / Master Bedroom 11'08 x 7'00 / Bedroom Two / Four Piece Bathroom Suite 8'11 x 8'09 / EPC Band F / Available Immediately / Fees Apply / Full References Required /

Accommodation Comprises \

We are pleased to offer for let this two bedroom maisonette in the heart of Canvey Island surrounded by the local amenities. Offering a modern kitchen with breakfast area, a large lounge with a door opening onto a balcony, two good size bedrooms, modern four piece bathroom suite and off street parking!

Two Bedroom Maisonette / Private Entrance Opening Onto Hallway / Modern Kitchen With Breakfast Area 10'10 x 10'07 / Large Lounge 16'11 x 10'03 / Balcony / Master Bedroom 11'08 x 7'00 / Bedroom Two / Four Piece Bathroom Suite 8'11 x 8'09 / Off Street Parking / EPC Band F / Available Immediately / Fees Apply / Full References Required /





The Consumer Protection from Unfair Trading Regulations 2008 (CPRs).

These details are for guidance only and complete accuracy cannot be guaranteed. If there is any point, which is of particular importance, verification should be obtained. They do not constitute a contract or part of a contract. All measurements are approximate. No guarantee can be given with regard to planning permissions or fitness for purpose. No apparatus, equipment, fixture or fitting has been tested. Items shown in photographs are NOT necessarily included. Interested Parties are advised to check availability and make an appointment to view before travelling to see a property.

The Data Protection Act 1998 Please note that all personal information provided by customers wishing to receive information and/or services from the estate agent will be processed by the estate agent, the team Association Consortium Company of which it is a member and team Association Limited for the purpose of providing services associated with the business of an estate agent and for the additional purposes set out in the privacy policy (copies available on request) but specifically excluding mailings or promotions by a third party. If you do not wish your personal information to be used for any of these purposes, please notify your estate agent.